

12/14 Volt 140, 160 & 185 Amp Brushless Alternator

Now High Temperature
Rated for New EPA
Emission Compliant
Engines!

The new Brushless Alternator for both OEM and Aftermarket provides output characteristics found only in brush type machines of similar ratings. The series follows the same design criteria as all Leece Neville alternators...superior performance at low RPM and long life now made longer through the use of brushless technology.

Features & Benefits

New 185 Amp models
available beginning
in June 2007!

New 125°C
Coming Soon!

The BLD/BLP Series of brushless alternators is designed with three major criteria in mind... Low end performance, longevity in service and the demanding operating needs of medium and heavy trucks. Features include:

- No brushes and slip rings to wear out providing significant mileage extension and lower maintenance cost for today's vehicles
- Designed for operating temperature conditions of -40°C to 110°C / -40°F to 230°F
- Solid rectifier lead frame creates a single, solid connection to all of the high temperature avalanche diodes. Diode connections are welded, not soldered
- Alternator cut-in speed of 850 rpm for the 140 amp unit and less than 1000 rpm for the 160 amp unit assures alternator output at engine idle and lower road speeds
- Over 60% of rated output at 1800 alternator rpm gives plenty of power in the normal engine operating range of most over the road diesel engines and allows lower pulley ratios for longer bearing life
- Large front and rear ball bearings to handle high belt loads, and now with high temperature grease
- Rotor and coil mass is evenly distributed to assure balance and eliminate vibration
- Utilizes many key components used in the well known 8LHA Series of alternators. These include rectifiers, regulators, bearings and hardware
- Vibration resistant design to assure longer product life
- Hex shaft models are also available on most models

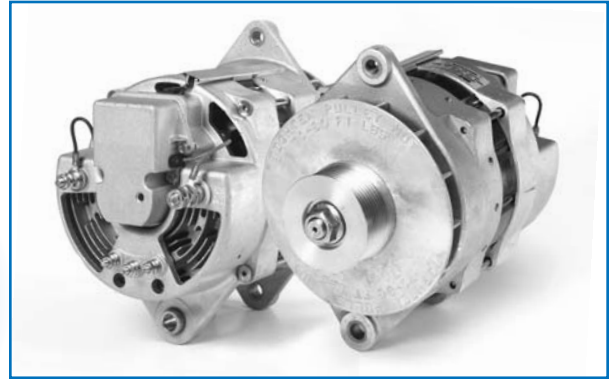
Applications

- Heavy and Medium Truck
- R-V Vehicles
- Off-Highway Vehicles, Marine

BLD Series

4" J180 Mount

Now upgraded to 110°C /230°F



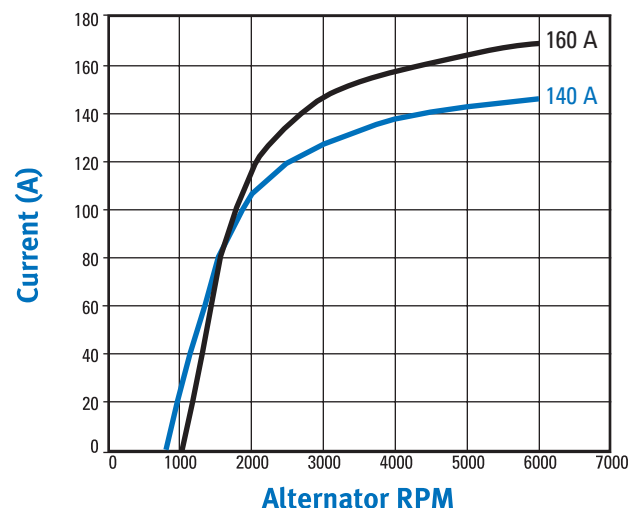
BLP Series

"4 Point" Pad Mount

Now upgraded to 110°C /230°F



Product Performance

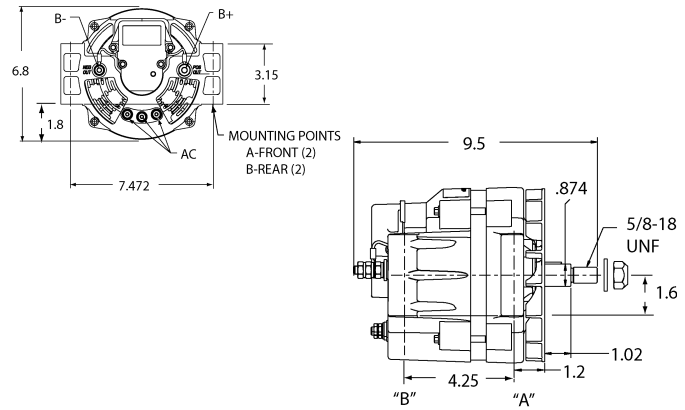
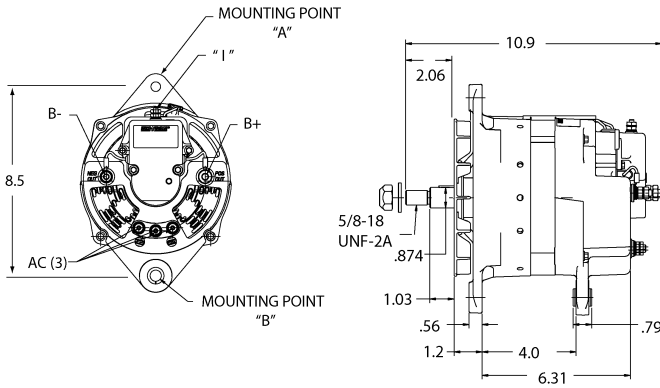


Dimensions

BLD Series

BLP Series

(dimensions in inches)



Specifications

Brushless Alternator

Model No.	BLD 2301	BLD 2305		BLD 2307	BLD 2308		BLD2331GH
Dual Foot J180 Mount Sales No.	110-801	110-800		110-803	110-804		BLD2331GH
Mounting Points : A (see Outline)	1/2"-13NC	1/2"-13NC		1/2"-13NC	1/2"-13NC		1/2"-13NC
B	.515" dia.	.515" dia.		.515" dia.	.515" dia.		.515" dia.
Model No.	BLP 2303	BLP 2306	BLP2318	BLP 2309	BLP 2310	BLP2319	BLP2332GH
"4 Point" Pad Mount Sales No.	110-811	110-810	BLP2318	110-813	110-814	BLP2319	BLP2332GH
Mounting Points : A (see Outline)	.42"	.42"	.42"	.42"	.42"	.42"	.42"
B	.48"	.48"	.48"	.48"	.48"	.48"	.48"
Output, Stabilized:							
5000 RPM	140 A	140 A	160 A	160 A	160 A	160 A	185 A
1800 RPM	105 A	105 A	93 A	93 A	93 A	93 A	
Temperature Range	-40°C to 110°C / -40°F to 230°F						
Rotation Direction	CW						
Max. Continuous RPM	8000						
Excitation Type	Self Excite						
Lamp Circuit Capacity	NA	.25 amps	NA	NA	.25 amps	NA	NA
Ground	Isolated						
Regulator Set Point	14.2 volts						
Bearing, Front	6305						
Bearing, Rear	6205						
Recommended Pulley Ratio	2:1 to 3:1						
Weight (lbs)	27.5						
Terminal Size: B+	5/16"-24						
B-	1/4"-28						
AC Tap / R Pin	10-24						
"I" Lamp	NA	M5	M5	NA	M5	NA	NA
Remote Sense	NA	NA	NA	M5	NA	M5	NA
Allowable Belt Load	250 Lbf						
Notes:	Standard Regulator	Regulator includes lamp driver function	Regulator includes remote sense function	Standard Regulator	Regulator includes lamp driver function	Regulator includes remote sense function	Higher Temperature Regulator