

## Leece-Neville Alternator

12 Volt, 160 & 185 Amps

24 Volt, 100, 150 & 175 Amps

The 8SC series is ideally suited for applications with extra heavy electrical loads and high charge requirements at idle. Our alternators have the integral charging systems that can handle the heavy belt loads and extremely high electrical loads on today's large diesel or gasoline engines.

### Features & Benefits

- Simplified wiring - insulated three wire system
- Built-in "Load Dump" protected regulator with solid state circuitry and external adjustment
- Varnished stator
- 7/8" heavy-duty shaft
- SAE double lug mount with adjustable steel bushing and steel insert
- Heavy-duty 5/16" output stud for superior electrical connections
- Special AC terminal for connection of tachometers and other instruments. Also "R" terminal for indicator lamp hook-up
- Long life copper graphite brushes enclosed in a dirt resistant chamber to extend brush life.
- The dynamically balanced rotor and shaft assembly utilizes a 25 mm ball bearing at the drive end and a 20 mm roller bearing. Both have grease reservoirs and protective seals to provide long life and smooth operations.
- Internal and external capacitors to suppress radio frequency interference
- Trash screens are available for protection against foreign particles

## 8SC/SCJ Series



## SCJ with trash screen

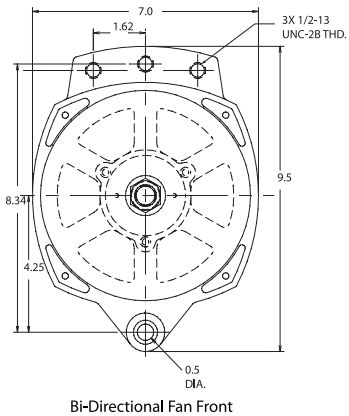


### Applications

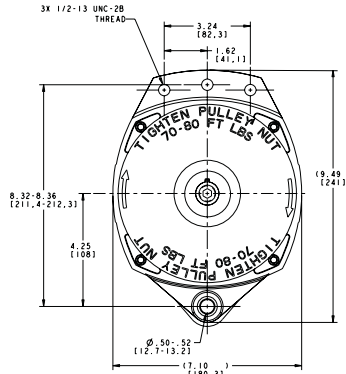
- Off-Highway
- Agriculture
- Emergency Vehicles
- Heavy Duty Trucks
- Transit Buses

# Dimensions

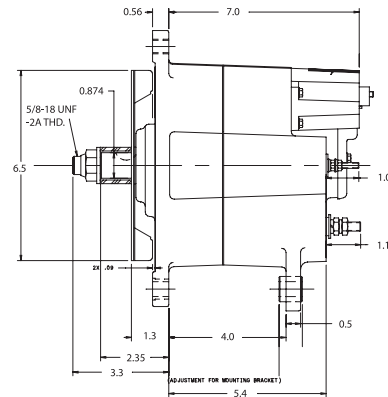
(dimensions in inches)



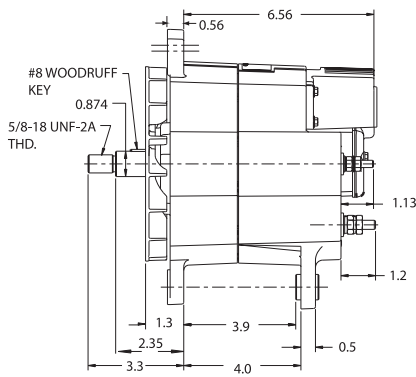
Bi-Directional Fan Front



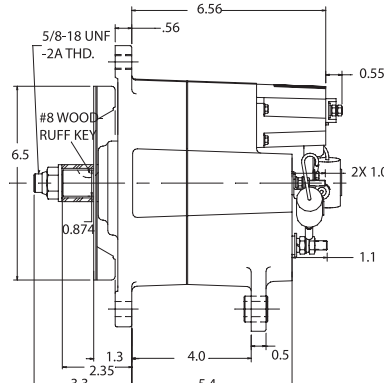
Clockwise Fan Front



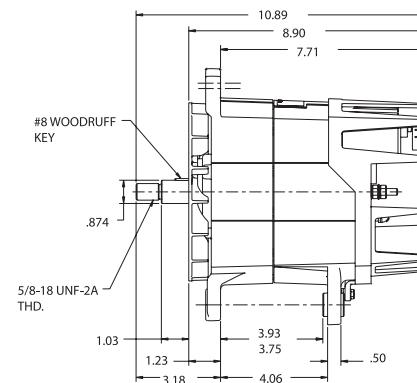
TYPE A



TYPE B



TYPE C



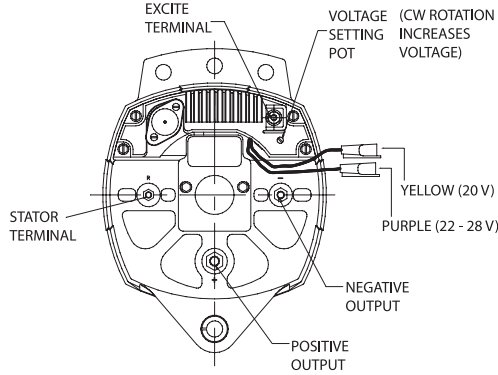
TYPE D

# Specifications

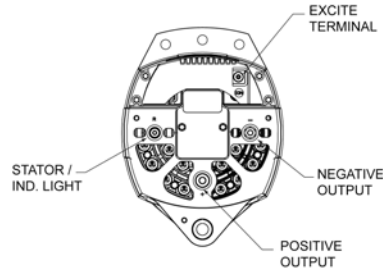
		12 VOLT					
Dual Foot	Model No.	SCJ2216	SCJ2231	8SC2020Z	8SC2023Z	SCJ2217	SCJ2227
J-180 Mount	Sales No.	SCJ2216	SCJ2231	110-563	110-565	SCJ2217	SCJ2227
	Type	D	D	B	B	D	D
Output, Stabilized:							
5000 RPM		160	160	185	185	185	185
2500 RPM		140	140	153	153	153	153
Temperature Range		-40 C to 93 C	-40 C to 93 C	-40 C to 93 C	-40 C to 93 C	-40 C to 93 C	-40 C to 93 C
Rotation Direction		CW	CW	CW	CW	CW	CW
Max. Speed RPM		6000	6000	6000	6000	6000	6000
Excitation Type		Self	Self	Self	Self	Self	Self
Lamp Circuit		.25 Amps	-	-	.25 Amps	.25 Amps	.25 Amps
Ground		Isolated	Isolated	Isolated	Isolated	Isolated	Isolated
Regulator Set Point Voltage		14.0	14.0	14.2	14.0	14.0	14.0
Regulator Part #		8RL2126	8RL2132	8RL2134	8RL2126	8RL2126	8RL2133
Weight (lbs/Kg)		27.75/12.6	27.75/12.6	27.75/12.6	27.75/12.6	27.75/12.6	27.75/12.6
Terminal Size:	B+	5/16"-24	5/16"-24	5/16"-24	5/16"-24	5/16"-24	5/16"-24
	B-	1/4"-28	1/4"-28	1/4"-28	1/4"-28	1/4"-28	1/4"-28
	AC	10-24	10-24	10-24	10-24	10-24	10-24
	Lamp Driver	M5x0.8	-	-	10-24	M5x0.8	M5x0.8
	Ignition	-	-	-	-	-	-
Notes:		Lamp Driver Trash Screen	- Trash Screen	-	Lamp Driver -	Lamp Driver Trash Screen	Lamp Driver Trash Screen

## Wire Diagrams

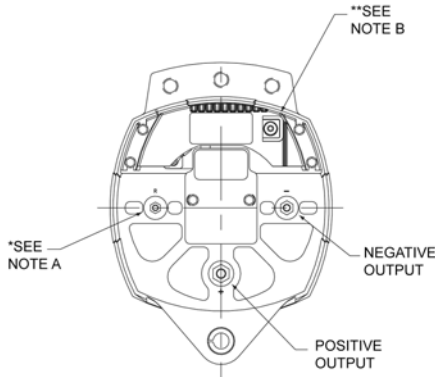
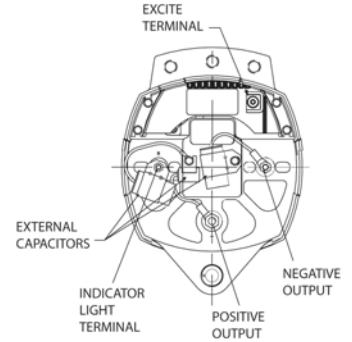
**8SC3018VA**



**8SC3017VA, 8SC3018VA & 8SC3110V**



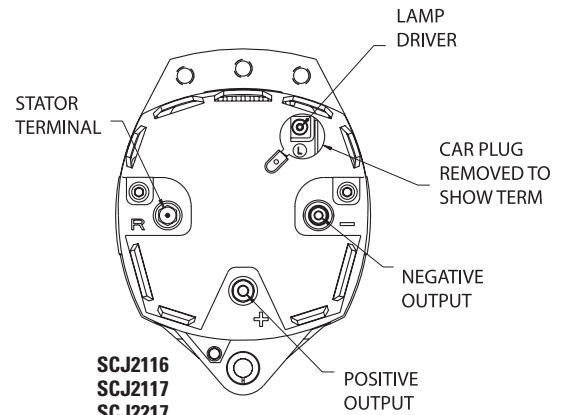
**8SC3015U**



**8SC2020Z, 8SC2023Z, 8SC3014U, 8SC3009ZA, 8SC3068V & 8SC3029Z**

**\* Note A:**  
8SC2020Z and 8SC2023Z = Stator Terminal  
8SC3014U, 8SC3029Z, 8SC3068V, and 8SC3009ZA = Indicator Light Terminal  
8SC3029Z has Stator Lead

**\*\* Note B:**  
8SC2023Z = Lamp Driver  
All Others : Ignition Terminal



**SCJ2116  
SCJ2117  
SCJ2217  
SCJ2227  
SCJ2231**

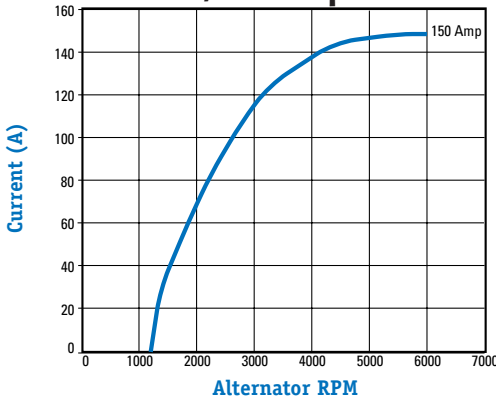
## Specifications

24 VOLT								
8SC3014U	8SC3015U	8SC3019U	8SC3017VA	8SC3018VA	8SC3068V	8SC3110V	8SC3009ZA	8SC3029Z
110-298	110-302	110-316	110-575	110-576	110-431	110-568	110-258	110-569
A	C	B	A	A	A	A	A	A
100	100	100	150	150	150	150	175	175
84	84	84	98	98	97	120	54	80
-40 C to 93 C	-40 C to 93 C	-40 C to 93 C	-40 C to 93 C	-40 C to 93 C	-40 C to 93 C	-40 C to 93 C	-40 C to 93 C	-40 C to 93 C
CW	CW	CW	Bi-Directional	Bi-Directional	Bi-Directional	Bi-Directional	Bi-Directional	Bi-Directional
6000	6000	6000	6000	6000	6000	6000	6000	6000
Ignition	Ignition	Ignition	Ignition	Ignition	Ignition	Ignition	Ignition	Ignition
-	-	-	-	-	-	.25 Amps	-	-
Isolated	Isolated	Isolated	Isolated	Isolated	Isolated	Isolated	Isolated	Isolated
28.0	28.0	28.0	28.0	28.0	28.0	28.0	28.0	28.0
8RL3024	8RL3024	8RL3024	8RL3023C	8RL3013A	8RL3024	8RL3140	8RL3024	8RL3024
27.75/12.6	27.75/12.6	27.75/12.6	27.75/12.6	27.75/12.6	27.75/12.6	27.75/12.6	27.75/12.6	27.75/12.6
M8x1.25	5/16"-24	5/16"-24	5/16"-24	5/16"-24	5/16"-24	5/16"-24	5/16"-24	5/16"-24
M6x1.0	1/4"-28	1/4"-28	1/4"-28	1/4"-28	1/4"-28	1/4"-28	1/4"-28	1/4"-28
M5x0.8	10-24	10-24	10-24	10-24	10-24	10-24	10-24	10-24
-	-	-	-	-	-	M5x0.8	-	-
-	-	-	-	-	-	-	-	-
-	-	-	-	-	-	Lamp Driver	-	-
Ind. Light	Ind. Light	Ind. Light	-	Remote Sense	Ind. Light	Trash Screen	Ind. Light	Ind. Light

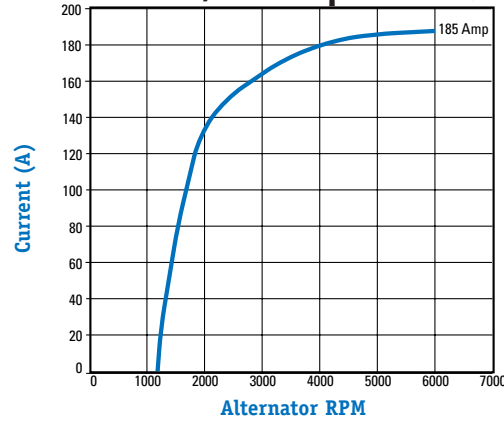
## Product Performance

Maximum Continuous Speed - 8000 rpm, Stabilized Performance @ 24° C

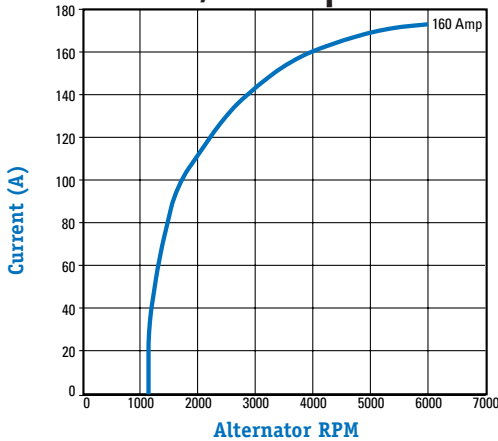
**24 Volts, 150 Amps** 8SC3017VA & 8SC3018VA



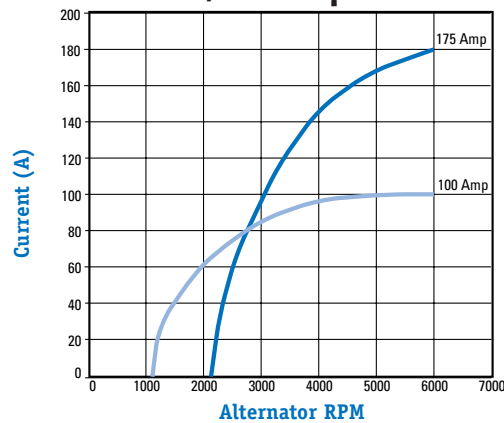
**12 Volts, 185 Amps** 8SC2020Z, 8SC2023Z, SCJ2217 & SCJ2227



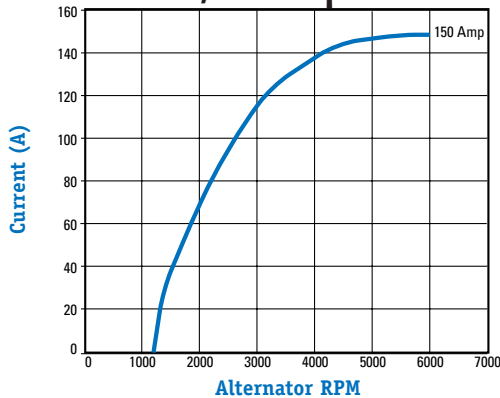
**12 Volts, 160 Amps** SCJ2216 & SCJ2231



**24 Volts, 100 Amps** 8SC3014U, 8SC3015U & 8SC3019U  
**24 Volts, 175 Amps** 8SC3009ZA & 8SC3029Z



**24 Volts, 150 Amps** 8SC3068V



**24 Volts, 150 Amps** 8SC3110V

